

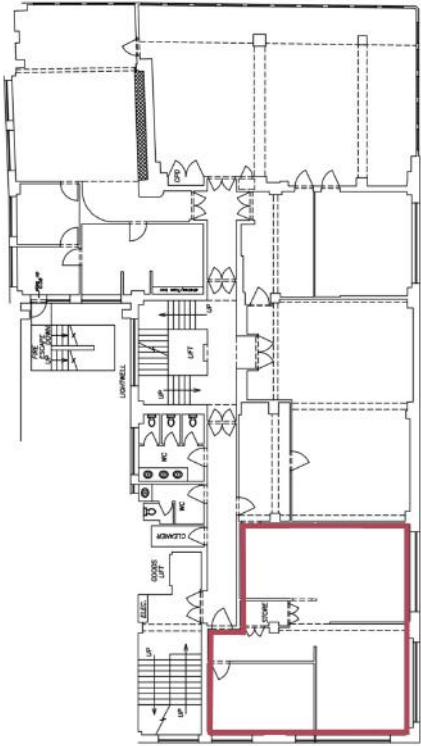
THE LANGHAM ESTATE

ATTRACTIVE SHOWROOM/OFFICE SUITE TO LET

**Moray House,
23-35 Great Titchfield Street, London W1**

SUITE 5, SECOND FLOOR | 865 sq ft / 80.36 m²





Located in the heart of this cosmopolitan fashion and media district, on the West side of Great Titchfield Street, between Little Portland Street and Mortimer Street. The property is within a moments' walk of Oxford Circus Station and the numerous shopping, entertainment and restaurant facilities that service this vibrant location.

- Mix of Interconnecting Rooms & 1 Private Office
- Video Entry Phone
- New Fibre Cabling
- Perimeter Trunking
- Good Ceiling Height

- Excellent Natural Light
- Storage Cupboards
- 24 Hour Access
- Passenger Lift
- Central Heating
- Down Lighting

Also Available | 5th Floor 3,250 sq ft
| 6th Floor 2,050 sq ft
| Suite 1.1 1,500 sq ft

RENT
 On application

LEASE
 A new Full Repairing & Insuring Lease is available for a term by arrangement, outside the Landlord & Tenant Act 1954.

POSSESSION
 Immediate upon completion of legal formalities

For further information call
020 7580 5656
 LanghamEstate.com | MyNoho.co.uk

MALCOLM COHEN
 malcolm.cohen@langhamestate.com
 020 7907 4983
 07768 156 577

KELLY MYERS
 kelly.myers@langhamestate.com
 020 7907 4962
 07739 220 411

Offices | Retail | Restaurants | Showrooms | Residential | Storage



Langham Estate Management Ltd, London House, 9A Margaret Street, London W1W 8RJ

Any property is offered subject to contract, availability, and confirmation of details. These particulars do not form part of any contract and, whilst believed to be correct, parties are recommended to satisfy themselves as to the accuracy. The Lessors or Langham Estate Management Limited, or any person in their employment, cannot make or give any representation or warranty whatsoever in relation to this property. Unless otherwise stated, all prices and rentals quoted are exclusive of any Value Added Tax to which they may be subject. Floorplans are for illustrative purposes only and may not accurately reflect the property's current internal layout.