



THE LANGHAM ESTATE

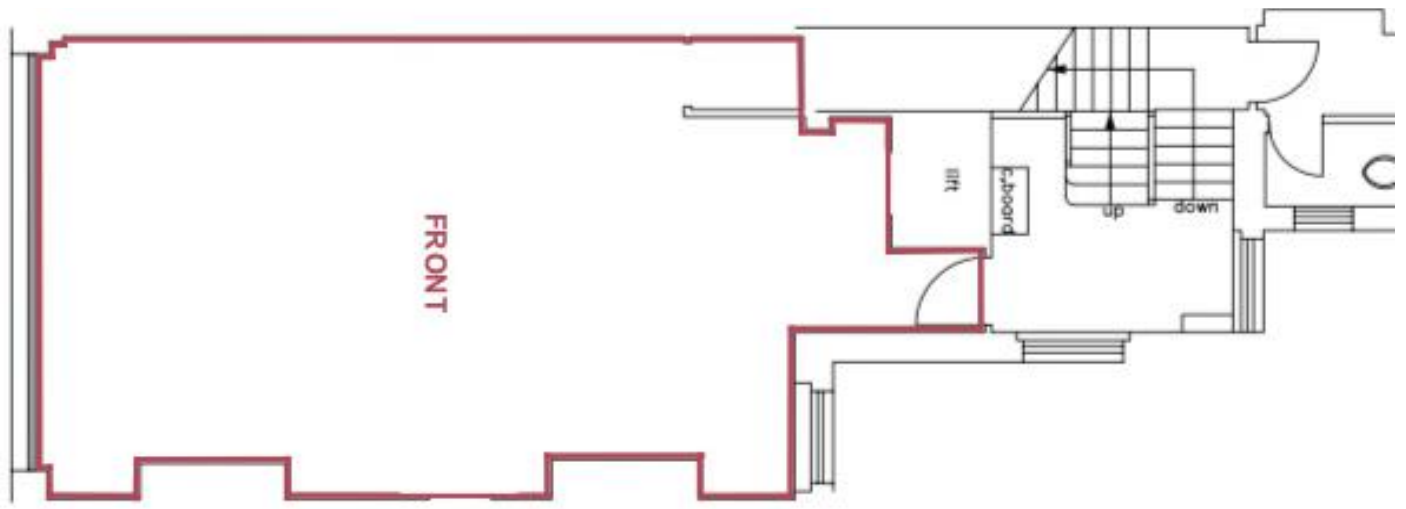
Looking for a property in
NOHO?
We've got it covered

OPEN PLAN OFFICE SUITE TO LET
20 Great Portland Street, London W1

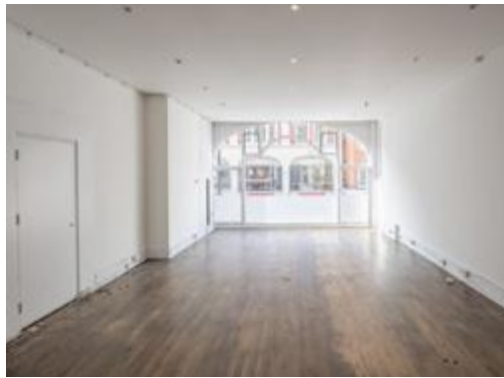
FIRST FLOOR (FRONT) | 560 sq ft / 52.02 m²



Situated on the East side of Great Portland Street, opposite Vapiano, between Margaret Street and Market Place. Communications are excellent with Oxford Circus Underground Station close by as are the numerous eateries and shopping facilities the area has to offer



FIRST FLOOR (FRONT)



Feature Window
 Excellent Natural Light
 Good Floor to Ceiling Height
 Original Wood Flooring
 Perimeter Trunking

Air-Conditioning (Not Tested)
 Communal WC's
 Passenger Lift
 Entryphone
 24 Hour Access

Also Available | 2nd Floor (Front) 455 sq ft

RENT

On application

LEASE

A new Full Repairing & Insuring Lease is available for a term by arrangement, outside the Landlord & Tenant Act 1954.

POSSESSION

Immediate upon completion of legal formalities

For further information call

020 7580 5656

LanghamEstate.com | MyNoho.co.uk

MALCOLM COHEN

malcolm.cohen@langhamestate.com

020 7907 4983

07768 156 577

KELLY MYERS

kelly.myers@langhamestate.com

020 7907 4962

07739 220 411



Langham Estate Management Ltd, London House, 9A Margaret Street, London W1W 8RJ

Any property is offered subject to contract, availability, and confirmation of details. These particulars do not form part of any contract and, whilst believed to be correct, parties are recommended to satisfy themselves as to the accuracy. The Lessors or Langham Estate Management Limited, or any person in their employment, cannot make or give any representation or warranty whatsoever in relation to this property. Unless otherwise stated, all prices and rentals quoted are exclusive of any Value Added Tax to which they may be subject. Floorplans are for illustrative purposes only and may not reflect the property's current internal layout.