

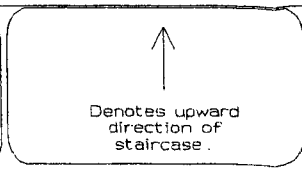
GROUND FLOOR

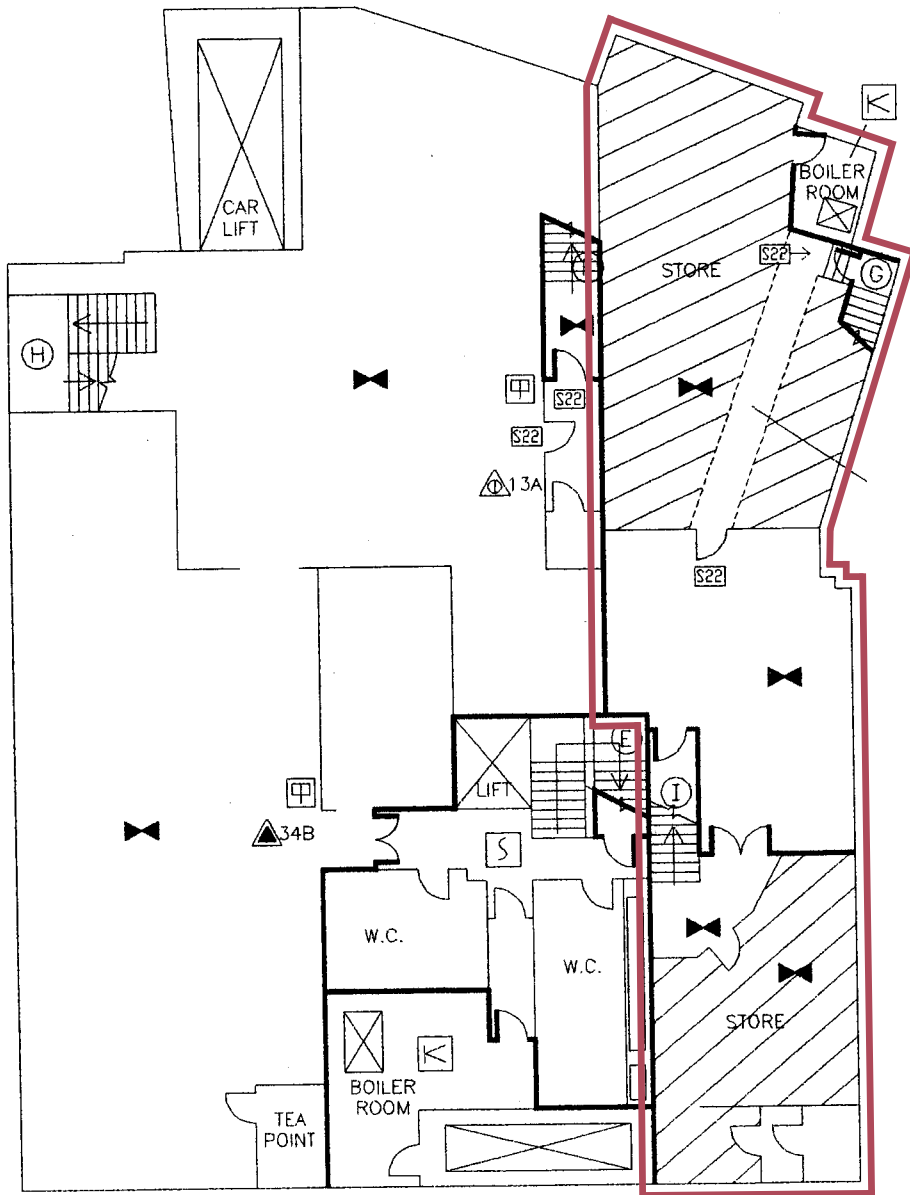
Electronic door lock

- The lock shall release upon actuation of the fire alarm system.
- The lock shall fail safe to open i.e. unlock on loss of power supply or disconnection of any relevant cable.
- An emergency "break glass" override switch, coloured green is sited adjacent to each door marked SL with instructions to open.

*SL - As indicated on Key to Plan Symbols.

JJD
 Approx Scale: 1:200
 Amend No:
 Amend Date:
 Acad Dwg Name: 01-11517-B-G
 Sheet Size: A3





GROU

BASEMENT



L F C D A
LONDON FIRE BRIGADE

File Ref: FS/WN/01/11517
Address: 22 & 23/25 EASTCASTLE STREET
LONDON
W1

Plan No: 1 OF 3
Drawn By: J.C.
Date: 23-3-00
Update: 03-04-00 J