

THE LANGHAM ESTATE

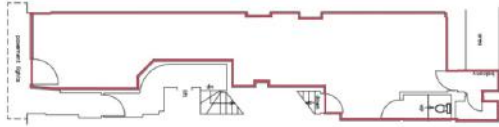
USE CLASS E OPPORTUNITY

50 Great Portland Street, London W1

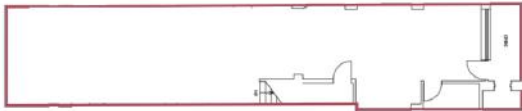
BASEMENT & GROUND FLOOR | 1,310 sq ft / 121.70 m²



GROUND FLOOR



BASEMENT FLOOR



Situated on the East side of Great Portland Street, South of Mortimer Street. It is within close proximity of both Oxford Street and Market Place with its trendy café scene. Transport facilities are excellent with Oxford Circus underground station being within easy walking distance. Nearby occupiers include **Busi, Revivme, Shadi Salon** and **Vola** to name but a few.

Window Frontage
Prime Location
Good Footfall
Excellent Transport Links
Good Floor to Ceiling Height

Street Entrance
Central Heating
Shell & Core State
Plumbing for Kitchen
24 Hour Access

Also Available | 2nd Floor 300 sq ft
| 4th Floor 310 sq ft

RENT

On application

LEASE

A new Full Repairing & Insuring Lease is available for a term by arrangement, outside the Landlord & Tenant Act 1954.

POSSESSION

Immediate upon completion of legal formalities

For further information call
020 7580 5656
LanghamEstate.com | MyNoho.co.uk

MALCOLM COHEN
malcolm.cohen@langhamestate.com
020 7907 4983
07768 156 577

KELLY MYERS
kelly.myers@langhamestate.com
020 7907 4962
07739 220 411

Offices | Retail | Restaurants | Showrooms | Residential | Storage



Langham Estate Management Ltd, London House, 9A Margaret Street, London W1W 8RJ

Any property is offered subject to contract, availability, and confirmation of details. These particulars do not form part of any contract and, whilst believed to be correct, parties are recommended to satisfy themselves as to the accuracy. The Lessors or Langham Estate Management Limited, or any person in their employment, cannot make or give any representation or warranty whatsoever in relation to this property. Unless otherwise stated, all prices and rentals quoted are exclusive of any Value Added Tax to which they may be subject. Floorplans are for illustrative purposes only and may not accurately reflect the property's current internal layout.