

THE LANGHAM ESTATE

Looking for a property in
NOHO?
We've got it covered

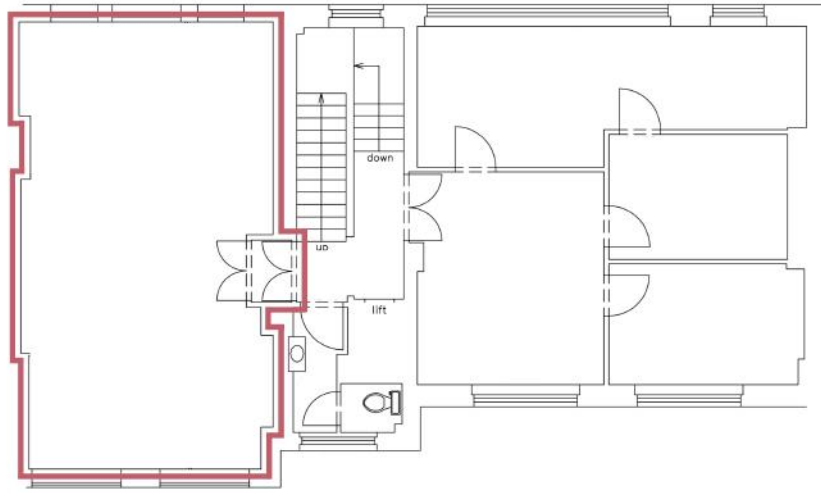
BRIGHT, REDECORATED, AIR-CONDITIONED OFFICE

51-53 Margaret Street, London W1

FIRST FLOOR (WEST) | 450 sq ft / 41.81 m²



Located on the south side of Margaret Street between Regent Street and Great Portland Street. The property is within minutes of Oxford Circus Underground Station and the numerous eateries and coffee shops that service this vibrant location



FIRST FLOOR (WEST)



All furniture displayed in images are computer generated

Open Plan
 Excellent Ceiling Height
 Excellent Natural Light
 Sash Windows with Secondary Glazing
 New Linear LED Lighting
 New Wood Flooring

Air Conditioning (Not Tested)
 Own Kitchenette
 Refurbished Communal WC's
 Passenger Lift
 24 Hour Access
 Entryphone

RENT

On application

LEASE

A new Full Repairing & Insuring Lease is available for a term by arrangement, outside the Landlord & Tenant Act 1954.

POSSESSION

Immediate upon completion of legal formalities

For further information call

020 7580 5656

LanghamEstate.com | MyNoho.co.uk

MALCOLM COHEN

malcolm.cohen@langhamestate.com

020 7907 4983

07768 156 577

KELLY MYERS

kelly.myers@langhamestate.com

020 7907 4962

07739 220 411



Langham Estate Management Ltd, London House, 9A Margaret Street, London W1W 8RJ

Any property is offered subject to contract, availability, and confirmation of details. These particulars do not form part of any contract and, whilst believed to be correct, parties are recommended to satisfy themselves as to the accuracy. The Lessors or Langham Estate Management Limited, or any person in their employment, cannot make or give any representation or warranty whatsoever in relation to this property. Unless otherwise stated, all prices and rentals quoted are exclusive of any Value Added Tax to which they may be subject. Floorplans are for illustrative purposes only and may not accurately reflect the property's current internal layout. Computer Generated images are intended for illustrative purposes only.