

THE LANGHAM ESTATE

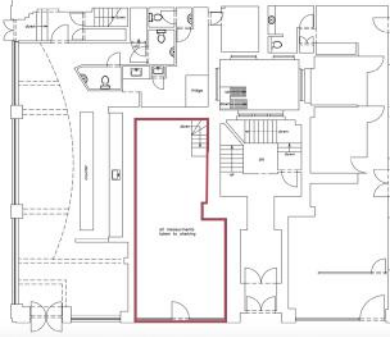
PRIME RETAIL UNIT TO LET - CLASS E

161 Great Portland Street, London W1

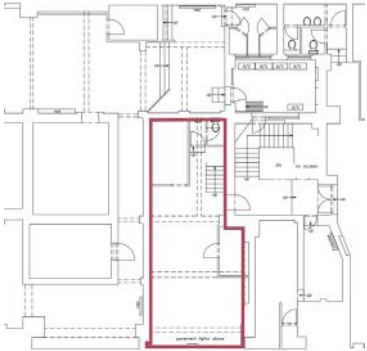
GROUND & BASEMENT FLOORS | 1,030 sq ft / 95.68 sq m



GROUND FLOOR



BASEMENT FLOOR



Located on the West side of Great Portland Street, close to its junction with Weymouth Street. The property is within minutes of Great Portland Street, Warren Street and Oxford Circus stations and the numerous trendy cafés and restaurants that service this vibrant location. Nearby operators include Kibele, Starbucks, Percy & Reed, Boots and Iberica Restaurants.

Glass Frontage
Open Plan Area
Good Natural Light
Good Footfall
Excellent Transport Links
Prime Location

Net Frontage: 4.83 m | 15 ft 84 ins
Internal Width: 5.23 m | 17 ft 15 ins

RENT

On application

LEASE

A new Full Repairing & Insuring Lease is available for a term by arrangement, outside the Landlord & Tenant Act 1954.

POSSESSION

Immediate upon completion of legal formalities

For further information call

020 7580 5656

LanghamEstate.com | MyNoho.co.uk

MALCOLM COHEN

malcolm.cohen@langhamestate.com

020 7907 4983

07768 156 577

KELLY MYERS

kelly.myers@langhamestate.com

020 7907 4962

07739 220 411

Offices | Retail | Restaurants | Showrooms | Residential | Storage



Langham Estate Management Ltd, London House, 9A Margaret Street, London W1W 8RJ

Any property is offered subject to contract, availability, and confirmation of details. These particulars do not form part of any contract and, whilst believed to be correct, parties are recommended to satisfy themselves as to the accuracy. The Lessors or Langham Estate Management Limited, or any person in their employment, cannot make or give any representation or warranty whatsoever in relation to this property. Unless otherwise stated, all prices and rentals quoted are exclusive of any Value Added Tax to which they may be subject. Floorplans are for illustrative purposes only and may not accurately reflect the property's current internal layout.