



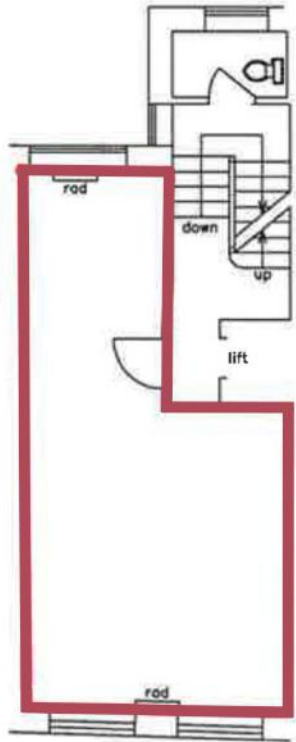
THE LANGHAM ESTATE

BRIGHT OFFICE SUITE TO LET

**50 Great Portland Street, London W1**

SECOND FLOOR | 300 sq ft / 27.87 m<sup>2</sup>





Situated on the east side of Great Portland Street, south of Mortimer Street. It is within close proximity of both Oxford Street and Market Place and its trendy café scene. Transport facilities are excellent with Oxford Circus underground station being within easy walking distance.

Open Plan  
 Good Ceiling Height  
 Good Natural Light  
 Wood Flooring  
 Feature Lighting

Communal WC's  
 Central Heating  
 Passenger Lift  
 Entry Phone  
 24 Hour Access

**RENT**

On application

**LEASE**

A new Full Repairing & Insuring Lease is available for a term by arrangement, outside the Landlord & Tenant Act 1954.

**POSSESSION**

Immediate upon completion of legal formalities

For further information call

**020 7580 5656**

LanghamEstate.com | MyNoho.co.uk

**MALCOLM COHEN**

malcolm.cohen@langhamestate.com

020 7907 4983

07768 156 577

**KELLY MYERS**

kelly.myers@langhamestate.com

020 7907 4962

07739 220 411

Offices | Retail | Restaurants | Showrooms | Residential | Storage



Langham Estate Management Ltd, London House, 9A Margaret Street, London W1W 8RJ

Any property is offered subject to contract, availability, and confirmation of details. These particulars do not form part of any contract and, whilst believed to be correct, parties are recommended to satisfy themselves as to the accuracy. The Lessors or Langham Estate Management Limited, or any person in their employment, cannot make or give any representation or warranty whatsoever in relation to this property. Unless otherwise stated, all prices and rentals quoted are exclusive of any Value Added Tax to which they may be subject. Floorplans are for illustrative purposes only and may not accurately reflect the property's current internal layout.