

THE LANGHAM ESTATE

PRIME CLASS E OPPORTUNITY

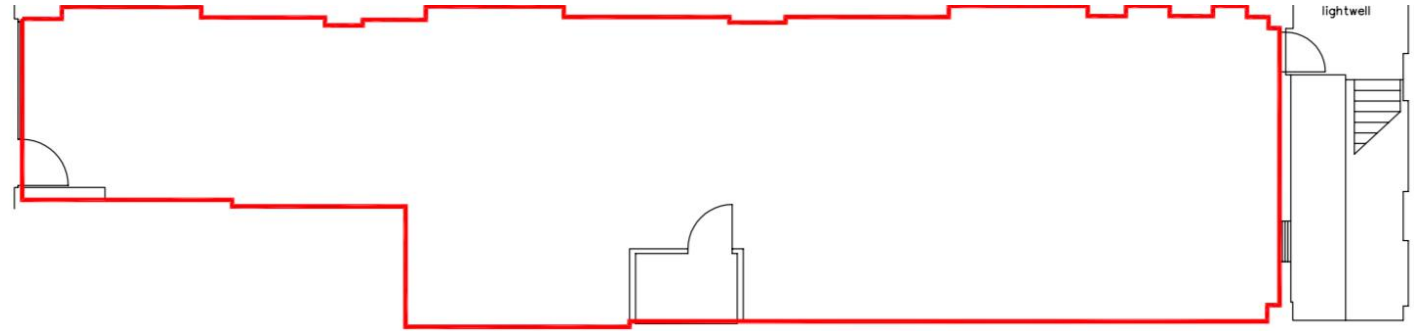
48 Margaret Street, London W1

GROUND FLOOR | 1,750 sq ft / 162.57 m²





GROUND FLOOR



Situated in the heart of Noho, on the South side of Margaret Street, equidistant from Regent Street and Great Portland Street. Oxford Circus underground station and the numerous shopping facilities along Oxford Street and Regent Street are within a moment's walk.

Nearby occupiers include **Wahaca, Pret A Manger, Boots, Hyotan Sushi, K-Pop, Coco Di Mama** and **Kiss the Hippo** to name but a few.

- Good Footfall
- Window Frontage
- Shell & Core Premises
- Moments From Oxford Circus & Regent Street
- 24 Hour Access
- Storage Space
- Prime Location
- Use Class E
- Good Ceiling Height

RENT

On application

LEASE

A new Full Repairing & Insuring Lease is available for a term by arrangement, outside the Landlord & Tenant Act 1954.

POSSESSION

Immediate upon completion of legal formalities

For further information call
020 7580 5656

LanghamEstate.com | MyNoho.co.uk

MALCOLM COHEN

malcolm.cohen@langhamestate.com
020 7907 4983
07768 156 577

KELLY MYERS

kelly.myers@langhamestate.com
020 7907 4962
07739 220 411

Offices | Retail | Restaurants | Showrooms | Residential | Storage



Langham Estate Management Ltd, London House, 9A Margaret Street, London W1W 8RJ

Any property is offered subject to contract, availability, and confirmation of details. These particulars do not form part of any contract and, whilst believed to be correct, parties are recommended to satisfy themselves as to the accuracy. The Lessors or Langham Estate Management Limited, or any person in their employment, cannot make or give any representation or warranty whatsoever in relation to this property. Unless otherwise stated, all prices and rentals quoted are exclusive of any Value Added Tax to which they may be subject. Floorplans are for illustrative purposes only and may not accurately reflect the property's current internal layout.