

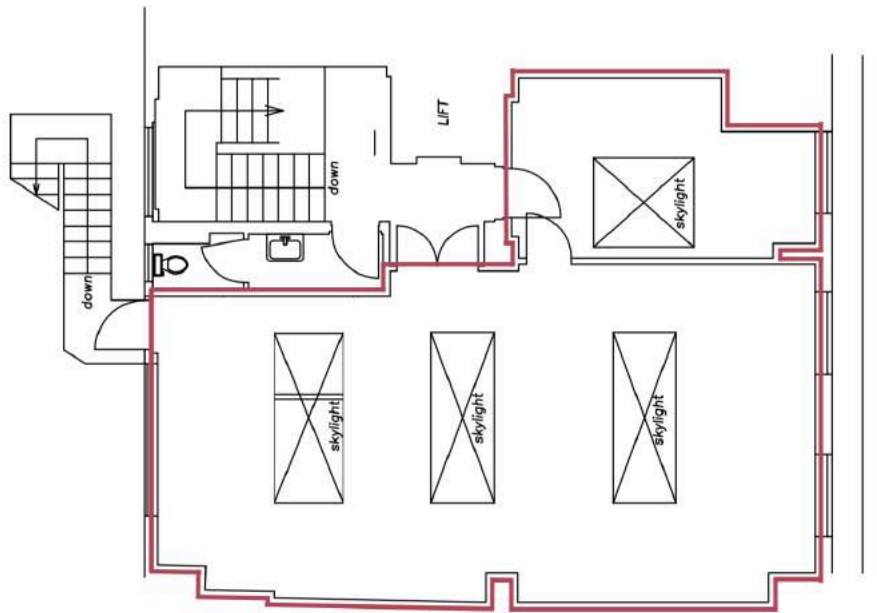
# THE LANGHAM ESTATE

Looking for a property in  
**NOHO?**  
We've got it covered

BRIGHT CONTEMPORARY OFFICE SUITE  
**20 Margaret Street, London W1**  
FIFTH FLOOR | 750 sq ft / 69.69 m<sup>2</sup>



Located in the heart of this cosmopolitan fashion and media location on the north side of Margaret Street, between Great Portland Street and Great Titchfield Street. Transport facilities are excellent with Oxford Circus underground station within easy walking distance.



FIFTH FLOOR



Open Plan with  
Separate Meeting Room  
x2 Tenant Entrances  
x4 Feature Skylights  
Excellent Natural Light

Wood Flooring  
Communal WC  
Passenger Lift  
Entry Phone  
24 Hour Access

Also Available | 1st Floor 810 sq ft

#### RENT

On application

#### LEASE

A new Full Repairing & Insuring Lease is available for a term by arrangement, outside the Landlord & Tenant Act 1954.

#### POSSESSION

Immediate upon completion of legal formalities

For further information call

**020 7580 5656**

LanghamEstate.com | MyNoho.co.uk

#### MALCOLM COHEN

malcolm.cohen@langhamestate.com

020 7907 4983

07768 156 577

#### KELLY MYERS

kelly.myers@langhamestate.com

020 7907 4962

07739 220 411



Langham Estate Management Ltd, London House, 9A Margaret Street, London W1W 8RJ

Any property is offered subject to contract, availability, and confirmation of details. These particulars do not form part of any contract and, whilst believed to be correct, parties are recommended to satisfy themselves as to the accuracy. The Lessors or Langham Estate Management Limited, or any person in their employment, cannot make or give any representation or warranty whatsoever in relation to this property. Unless otherwise stated, all prices and rentals quoted are exclusive of any Value Added Tax to which they may be subject. Please note that any floorplans displayed are for illustrative purposes only and are not to scale.