



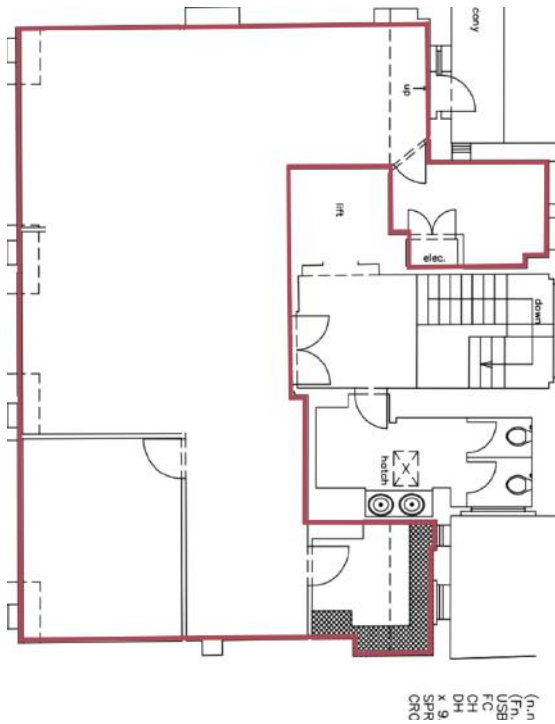
THE LANGHAM ESTATE

TRENDY OFFICE SUITE

111-113 Great Portland Street, London W1

FOURTH FLOOR | 1,180 sq ft / 109.62 m²





Located on the West side of Great Portland Street, close to its junction with New Cavendish Street. The area benefits from numerous restaurants and cafes and is within easy walking distance of Great Portland Street, Warren Street and Oxford Circus underground stations.

Open Plan with
1 Meeting Room
Excellent Ceiling Height
Video Entry Phone
Own Fitted Kitchen
Original Wood Flooring
Excellent Natural Light

Passenger Lift
24 Hour Access
Perimeter Trunking
Feature Lighting
Central Heating
Newly Refurbished WC's
Storage Cupboard

Also Available | 2nd Floor 1,270 sq ft
| 3rd Floor 1,675 sq ft

RENT

On application

LEASE

A new Full Repairing & Insuring Lease is available for a term by arrangement, outside the Landlord & Tenant Act 1954.

POSSESSION

Immediate upon completion of legal formalities

For further information call

020 7580 5656

LanghamEstate.com | MyNoho.co.uk

MALCOLM COHEN

malcolm.cohen@langhamestate.com

020 7907 4983

07768 156 577

KELLY MYERS

kelly.myers@langhamestate.com

020 7907 4962

07739 220 411

Offices | Retail | Restaurants | Showrooms | Residential | Storage



Langham Estate Management Ltd, London House, 9A Margaret Street, London W1W 8RJ

Any property is offered subject to contract, availability, and confirmation of details. These particulars do not form part of any contract and, whilst believed to be correct, parties are recommended to satisfy themselves as to the accuracy. The Lessors or Langham Estate Management Limited, or any person in their employment, cannot make or give any representation or warranty whatsoever in relation to this property. Unless otherwise stated, all prices and rentals quoted are exclusive of any Value Added Tax to which they may be subject. Floorplans are for illustrative purposes only and may not accurately reflect the property's current internal layout.